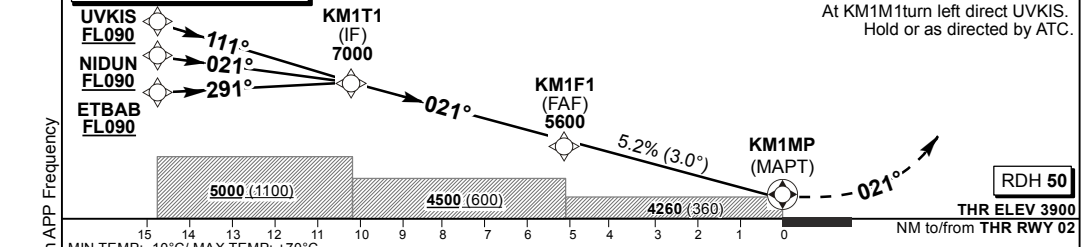


<b>DIST (NM) to KM1MP</b>	5.18	5	4	3	2	1	
<b>ADVISORY ALT(HGT)</b>	5600 (1700)	5550 (1650)	5230 (1330)	4910 (1010)	4588 (688)	4269 (369)	

**TRANSITION ALT 7000**  
**TRANSITION LEVEL ATC**



Straight-in Approach	OCA (H)	A				B				C				D				GS	KT	80	100	120	140	160	180			
		2.5%	4.0%	2.5%	4.0%	2.5%	4.0%	2.5%	4.0%	2.5%	4.0%	2.5%	4.0%	2.5%	4.0%	Rate of descent	FPM									425	531	637
LNAV ONLY	4780 (880)	4780 (880)	4780 (880)	4780 (880)	4780 (880)	4780 (880)	4780 (880)	4780 (880)	4780 (880)	4780 (880)	4780 (880)	4780 (880)	4780 (880)	4780 (880)	KM1F1 to KM1MP	M:S	3:53	3:06	2:35	2:13	1:56	1:43						
LNAV/VNAV	4760 (860)	4760 (860)	4760 (860)	4760 (860)	4760 (860)	4760 (860)	4760 (860)	4760 (860)	4760 (860)	4760 (860)	4760 (860)	4760 (860)	4760 (860)															
VNAV	4190 (290)	4190 (290)	4190 (290)	4190 (290)	4190 (290)	4190 (290)	4190 (290)	4190 (290)	4190 (290)	4190 (290)	4190 (290)	4190 (290)	4190 (290)															
RVR	1500m	1500m	1500m	1800m	2000m																							
ALS OUT	1500m	1500m	2000m	2000m																								
Circling	4520 (570)	4620 (670)	5390 (1440)	5390 (1440)																								

CHANGE: Bloemfontein APP Frequency